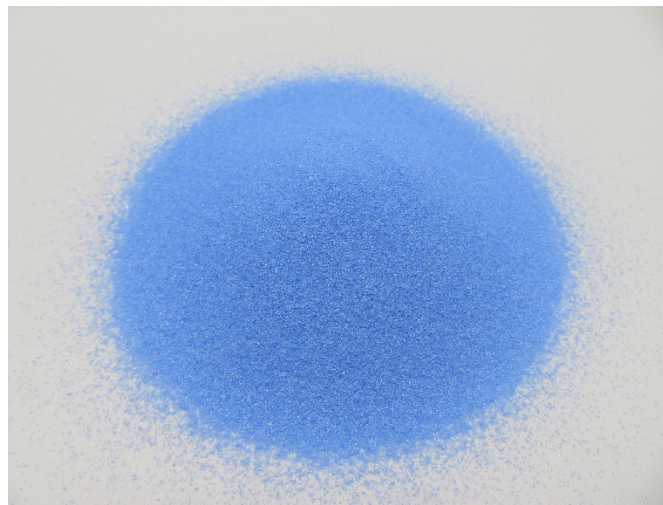
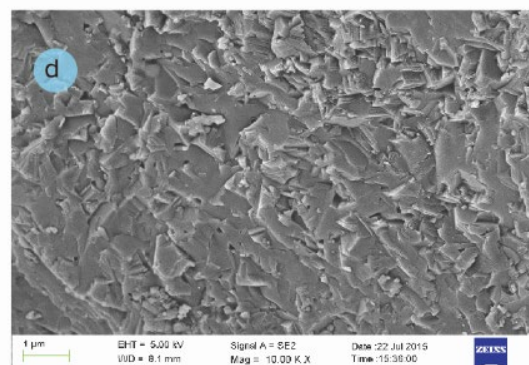
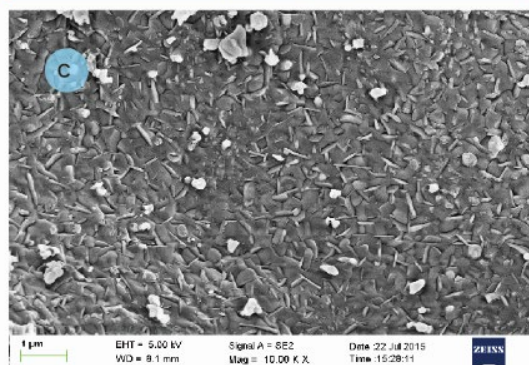
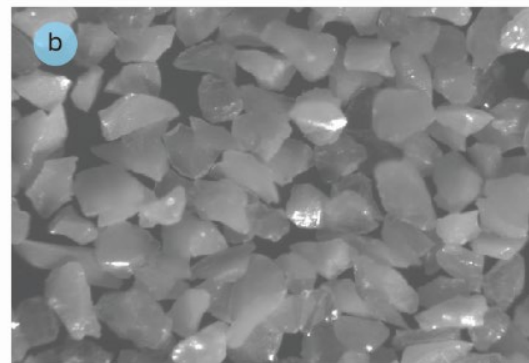
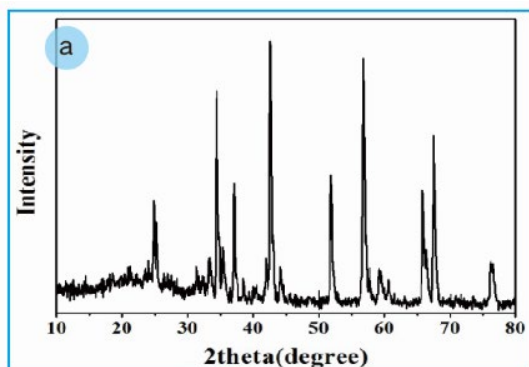


# Blue Sol-Gel Abrasive Grain (BSG)



Ceramic abrasive grain is a brand new structure ceramics material with less than  $1\ \mu\text{m}$  crystal grain size, and applied in the fields of bonded abrasives, coated abrasives and other special abrasive tools, which has much higher performance than fused alumina abrasive in the specification of hardness, strength, toughness and friability etc. Its grain containing hundred thousand and even ten million of alumina micro crystals instead of only a few crystals in the grain of the fused alumina abrasive, and its microcrystals falling off accordingly in the grinding process, that's why ceramic abrasive grain can multiply increase the life and efficiency of the abrasive tools and have the advantages of machining accuracy and cool cutting as well.



- (a) X Ray Diffraction Spectrum XRD
- (b) Optical Microscope Photograph
- (c) Surface Photograph of SEM SEM
- (d) Section Photograph of SEM

**Specification:**

Microstructure	Stacked nanosheet structure			Average Crystal Size	200nm
Microhardness (HV0.2)				Compression Strength of Single Particle (N)	Ball Grinding Toughness
Ave.	Max.	Min.	Relative Deviation		
2037.2	2105.5	1930.7	8.6%	30.30(50/60) 44.35(45/50)	68.67%(70/80)

**Application:**

- 1) Hard metal alloy with high strength
- 2) Vitriified bond, resin bond
- 3) Surface grinding, form grinding, roll grinding, worm grinding and internal grinding (hole and inner raceway etc.)

---

Room 801, Building C3,  
 Qilu E-commerce Valley, No.139 Liuquan Road,  
 Zibo High-tech Zone, Shandong, China 255086  
 +86-533-3171838  
[Tea.song@jct-abrasives.com](mailto:Tea.song@jct-abrasives.com)  
[www.jct-abrasives.com](http://www.jct-abrasives.com)

